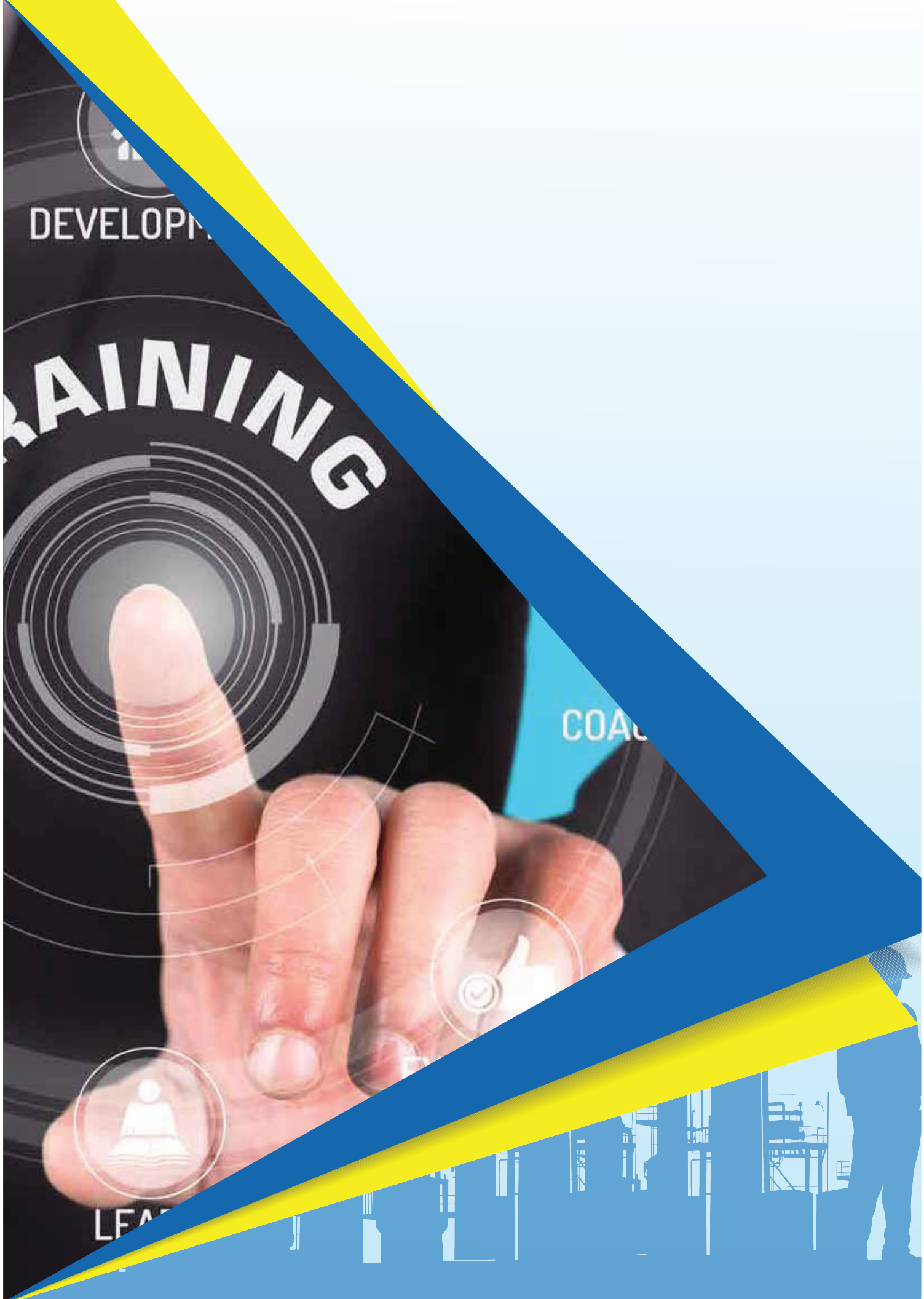


## E Learning Solutions

- Centum VP Virtual Operator Trainer
- Process, Safety and basic Engineering courses
  - Safe System of Work Range
  - Safety Awareness range
  - Environmental Range
  - Process Operation and technology Range: Oil & Gas
  - Process Operation and Technology Range: Chemical
  - Integrity Management Range
  - Mechanical engineering Range
  - Oil & Gas Industry Familiarization Range
- International Minimum Industry Safety Training - IMST





DEVELOPMENT

TRAINING

COACH

LEARN

# **CENTUM VP VIRTUAL OPERATOR TRAINER**



# CENTUM VP Virtual Operator Trainer



CENTUM VP Virtual Operator Trainer for new and experienced operators, delivered around the world 24/7 on-demand through the cloud. Trainees receive instruction and practice on their own private, fully-functioning instance of CENTUM VP Human Interface Station (HIS).



## CENTUM VP Virtual Operator Trainer delivers:

- Web-Based Training on CENTUM VP HIS Navigation, Basics and Standard Graphics, Trends, System Alarms and System Overview, Process Alarms, and Operator Reports.
- Interactive practice exercises in CENTUM VP HIS.
- Skill and knowledge assessments.
- Reporting and results tracking via Learning Management System (LMS).
- Completion certificate.



## The self-paced CENTUM VP Virtual Operator Trainer is ideal for:

- Initial training of new Operators,
- Conversion of existing Operators from different DCS,
- Refresher training for experienced Operators, and
- Practice and improvement of CENTUM VP knowledge and skills.



## Custom Virtual Operator training

Custom Virtual Operator training using client specific process screens, graphics, and Standard Operating Procedures, and designed to meet client's training objectives and requirements, is available upon request.



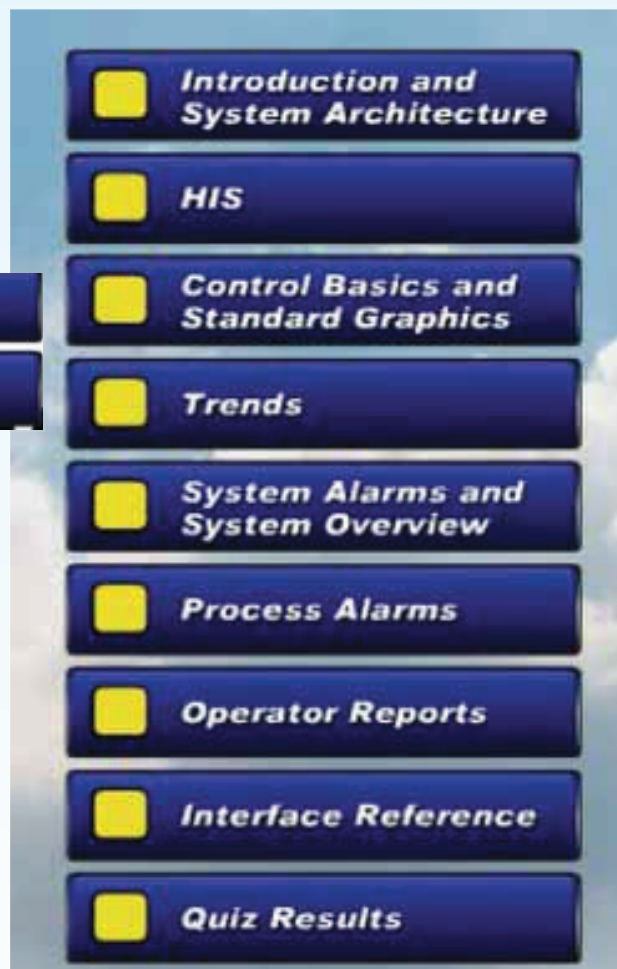
Bulletin 43G01F10-01EN



Combines Guided lessons  
with Exercises



Cloud based System :  
Accessible all around the  
world 24/7



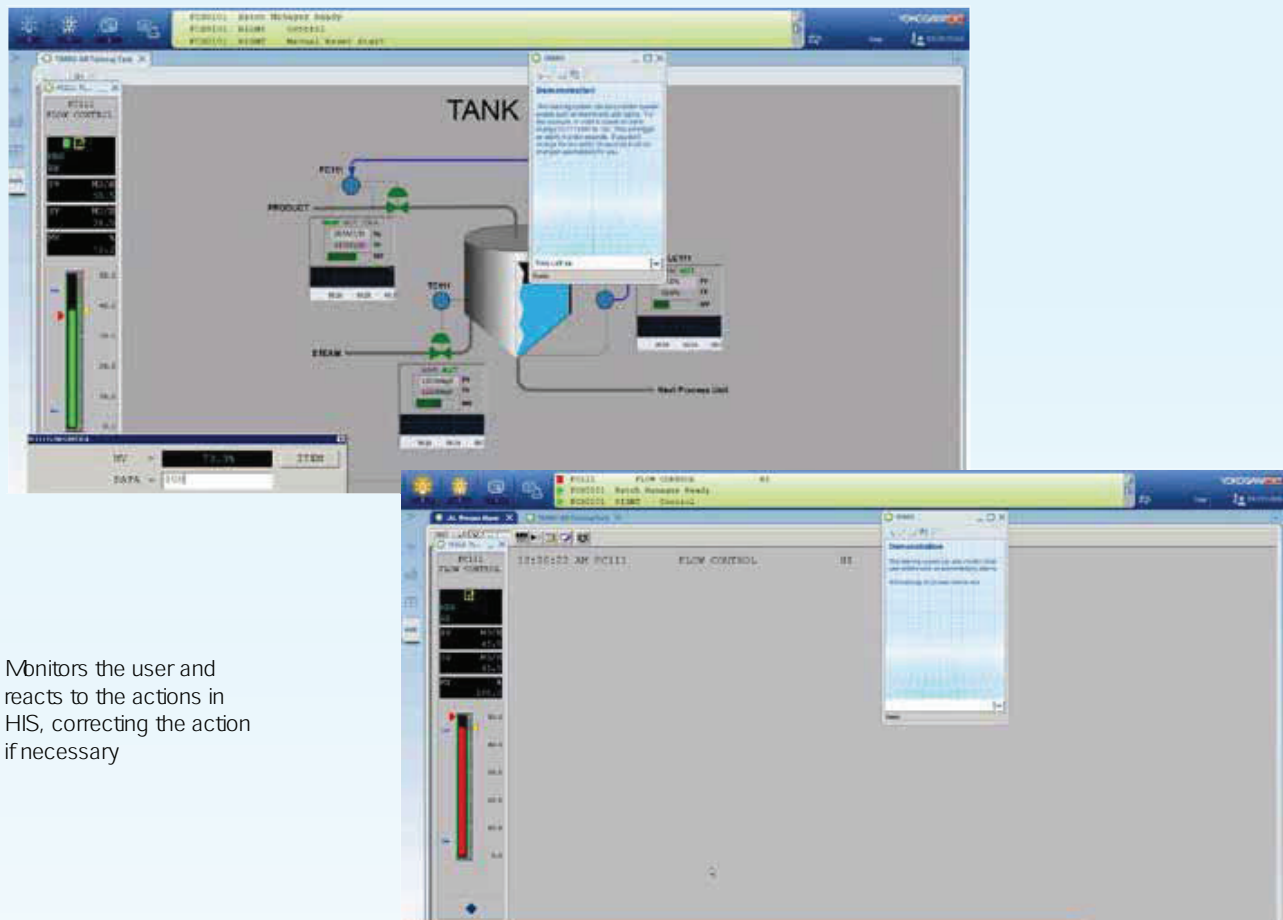




Grants the operator with a fully functional Centum VP Human Interface Station (HIS)



Covers all features & Functionalities of Centum VP



Monitors the user and reacts to the actions in HIS, correcting the action if necessary



The integrated Learning Management System enables the delivery of a certificate upon completion of the whole training





**PROCESS, SAFETY  
AND  
BASIC ENGINEERING COURSES**



## Contents and Objectives of Process Operation E-Learning

Instructional Design expertise + Learner engagement + flexible LMS + certification = Some of the reasons why E-Learning contents are trusted by over 800 customers

### Target Audience

#### Typical users:

- Engineers and Technicians working in the Power and Oil & Gas Industry
- New Starts to the Industry
- Long term development of employees who wish to gain formal vocational qualifications

#### Typical Company profile for Process Operations:

- National Oil Companies
- Service companies
- Automation vendors
- EPC companies
- Contractors

### Benefits of the courses

1. The courses content ensure that people's learning objectives and met
    - One of the core competencies is subject matter expertise combined with instruction design.
    - Contents are design in a way that encourages knowledge retention, using features such as continuous assessments and automatic remediation of incorrectly responded questions.
    - This quality technique is to ensure that content remains relevant and factually correct.
  2. The courses content are delivered in a format that keeps the learners engaged.
  3. The courses uses a LMS (Learning Management System) which is easy to use. It allows administrators to store, track, search and analyze e-learning outputs which directly communicate the knowledge gained by the participants.
- Process E Learning

## Safety Awareness Range

Training Session	Duration	Reference
Abrasive Wheels	30 min	AT211_035_001
Asbestos Awareness	30 min	AT211_015_001
ATEX/PED	90 min	AT211_026_001
Compression Fittings and Small Bore Tubing	85 min	AT211_002_001
COSHH Awareness	60 min	AT211_016_001
Display Screen Equipment Awareness (DSE)	30 min	AT211_027_001
Drill Floor and Drill Derricks	30 min	AT211_007_001
Dropped Objects	47 min	AT211_032_001
Gantry Cranes	20 min	AT211_011_001
Gas Hydrates Awareness Learning Objectives	90 min	AT211_014_001
Hand Safety	30 min	AT211_041_001
Hand Arm Vibration (HAVS) Awareness	40 min	AT211_031_001
Hydrogen Sulphide Awareness	30 min	AT211_019_001
Launches and Personnel Transfers	20 min	AT211_012_001
Lifting Operations Awareness (LOLER)	60 min	AT211_025_001
Malaria Awareness	20 min	AT211_036_001
Manual Handling Awareness	60 min	AT211_017_001
Mercury Awareness	30 min	AT211_022_001
Nitrogen Awareness	30 min	AT211_003_001
Noise Awareness	30 min	AT211_021_001
NORM / LSA Scale Awareness	30 min	AT211_020_001
Personal Protective Equipment (PPE)	40 min	AT211_034_001
Personal Safety and Security	40 min	AT211_024_001
Pressure Vessel Inspection	20 min	AT211_004_001
Provision and Use of Work Equipment Regulations (PUWER)	40 min	AT211_030_001
Rigs Under Tow	30 min	AT211_010_001
Safe Driving at Work	150 min	N/A
Shared Common Induction	60 min	AT211_001_001
Slips, Trips and Falls	15 min	AT211_029_001
Stress Awareness	40 min	AT211_028_001
The Basics of Confined Space Entry	30 min	AT211_009_001
Travel Risks	30 min	AT211_008_001
Welding, Grinding and Machinery	30 min	AT211_005_001
Working with Electricity	20 min	AT211_006_001
Working at Height	20 min	AT211_013_001
Pressure Testing	60 min	AT211_023_001

## Safe System of work range

Training Session		Duration	Reference
Authorised Gas Testing (Hybrid)		210min	AT210_006_001
Authorised Gas Testing - Level 1		120min	
Authorised Gas Testing - Level 2		100min	
Authorised Gas Testing - Level 3		60 min	
Confined Space Entry		75 min	AT210_007_001
Electrical Safety Rules		120min	AT210_004_001
Integrated Safe System of Work (ISSoW) PA		90min	AT210_002_002
Integrated Safe System of Work (ISSoW) PU		90min	AT210_002_001
Mechanical Isolations		90min	AT210_003_001
Task Risk Assessment		90min	AT210_005_001

## Environmental range

Training Session		Duration	Reference
Atmospheric Emissions		30min	AT212_007_001
Chemicals		35min	AT212_005_001
Environmental Awareness		30min	AT212_001_001
Environmental Compliance		45min	AT212_003_001
Environmental Impact Assessment (EIA)		45min	AT212_004_001
Introduction to Environmental Management		15min	AT212_002_001
Oil Discharge to Sea		45min	AT212_006_001
Oil Pollution Emergency Planning		45min	AT212_009_001
Onshore Waste Management and Awareness		30min	
Onshore Office Environmental Management and Awareness		25min	
Waste Management		45min	AT212_008_001



### Process operation and technology range – Oil & Gas

Training Session	Duration	Reference
Compressed Air	20 min	AT213_013_001
Floating Production, Storage and Offloading (FPSO) Vessels	180 min	AT213_003_001
Fuel Systems	20 min	AT213_014_001
Gas Compression	160 min	AT213_002_001
Gas Treatment	120 min	AT213_008_001
HVAC	20 min	AT213_018_001
Natural Gas Liquids and Liquefied Natural Gas	180 min	AT213_007_001
Oil and Gas Extraction	150 min	AT213_010_001
Oil and Gas Metering, Sampling and Pigging	240 min	AT213_009_001
Process and Instrument Diagrams	90 min	AT213_003_001
Potable Water	20 min	AT213_016_001
Power Generation	20 min	AT213_015_001
Produced Water	150 min	AT213_003_001
Seawater and Firewater	20 min	AT213_017_001
Separation	170 min	AT213_001_001
Water Injection	210 min	AT213_006_001

### Process operation and technology range – Chemical

Training Session	Duration	Reference
Compressors and Compression Technology	120 min	AT214_005_001
Distillation	120 min	AT214_003_001
Heat Transfer and Fluid Flow	265 min	AT214_002_001
Process Chemistry	180 min	AT214_001_001
Process Control and Fault Diagnosis	N/A	AT214_004_001

## Process operation and technology range – Chemical

Training Session	Duration	Reference
Compressors and Compression Technology	120 min	AT214_005_001
Distillation	120 min	AT214_003_001
Heat Transfer and Fluid Flow	265 min	AT214_002_001
Process Chemistry	180 min	AT214_001_001
Process Control and Fault Diagnosis	N/A	AT214_004_001

## Electrical Engineering range

Training Session	Duration	Reference
Batteries and UPS	20 min	AT216_011_001
Control and Distribution of Power	20 min	AT216_008_001
Electrical Standards and Plant Loads	20 min	AT216_004_001
Electric Motors	20 min	AT216_009_001
Introduction to Power System Design	20 min	AT216_006_001
Motor Performance	20 min	AT216_005_001
Power Generation	20 min	AT216_010_001
Power Production Capacity	20 min	AT216_001_001
Power Systems Design Options	30 min	AT216_002_001
Protection Systems	20 min	AT216_007_001
Safety in Design	20 min	AT216_003_001

## Mechanical Engineering range

Training Session	Duration	Reference
Introduction to Friction and Lubrication	35 min	AT217_011_001
Introduction to Centrifugal Compressors and Knock-out Drums	30 min	AT217_009_001
Introduction to Furnace Operations	20 min	AT217_004_001
Introduction to Reciprocating Compressors	30 min	AT217_008_001
Introduction to Seals	60 min	AT217_012_001
Introduction to Valves	20 min	AT217_007_001
Introduction to Diesel Engines	20 min	AT217_003_001
Introduction to Gas Turbines	20 min	AT217_002_001
Introduction to Heat Exchangers	20 min	AT217_005_001
Introduction to Pumps	20 min	AT217_001_001
Introduction to Tank Storage and Ullage	20 min	AT217_006_001
Mechanical Joint Integrity	478 min	AT217_010_001